

in the pen.

There was a color at wayside after keeping a name of flower on a path in mind.















in the pen. INDEX

01_ オオイヌノフグリ [阿久比町]

02_ ホトケノザ [美浜町]

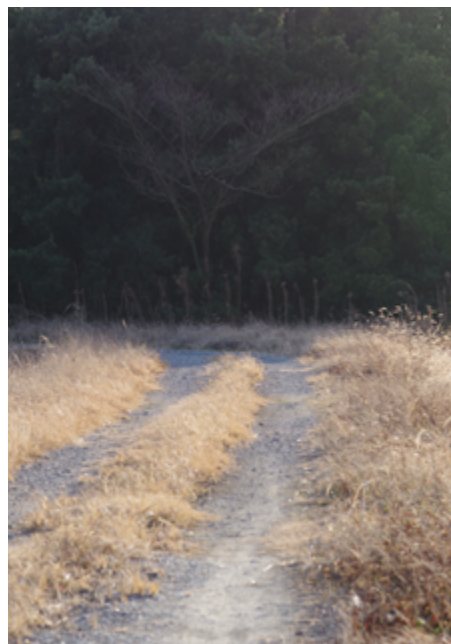
03_ ツマグロヒョウモン [美浜町]

04_ コサギ [半田市]

05_ テイカカズラ [南知多町]

06_ 森の止水 [南知多町]

cover_ コツボゴケ [南知多町]



[美浜町]

01 _ *Veronica persica*

"The bright blue flower of speedwell is shining in the winter field." [Agui T.]

02 _ *Lamium amplexicaule*

"Henbit flowers cover the corner of a dry rice field on a sunny winter day." [Mihama T.]

03 _ *Argyreus hyperbius*

"The Indian Fritillary, which emerged at the beginning of the year, is receiving sunlight."
[Mihama T.]

04 _ *Egretta garzetta*

"A little egret looking for food in a pond where winter birds gather." [Handa C.]

05 _ *Trachelospermum asiaticum*

"A small seed with long hair. It flew from somewhere and found a place to sprout."
[Minamichita T.]

06 _ Still water in the forest

"A forest with many small puddle. Amphibians may spawn here in the spring"
[Minamichita T.]

